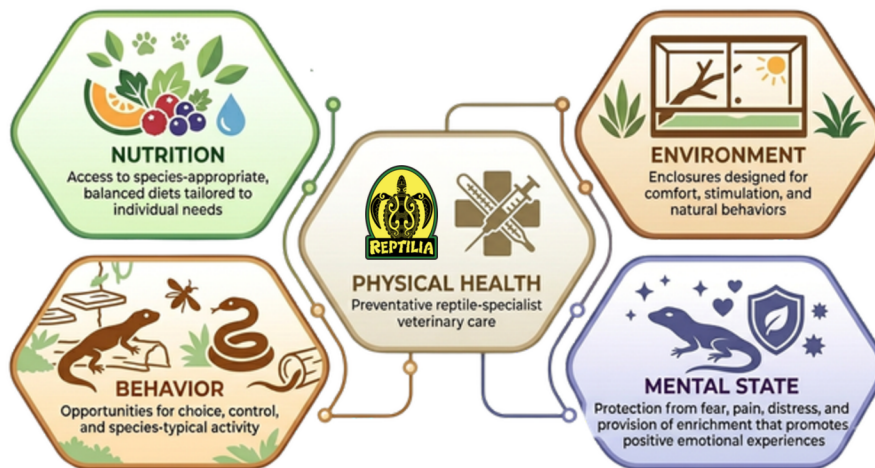


ANIMAL WELFARE COMMITMENT STATEMENT

At Reptilia, we recognize our ethical and professional responsibility to provide exceptional care for the animals entrusted to us. As a zoological institution, we are committed to aligning our practices with the highest industry standards, including those established by the Canadian Association of Zoos and Aquariums (CAZA) and the World Association of Zoos and Aquariums (WAZA).

Our institutional approach to animal welfare is grounded in the internationally recognized Five Domains Model, which considers:



- Nutrition – Access to species-appropriate, balanced diets tailored to individual needs
- Environment – Enclosures designed for comfort, stimulation, and natural behaviors
- Physical Health – Preventative and responsive veterinary care
- Behaviour – Opportunities for choice, control, and species-typical activity
- Mental State – Protection from fear, pain, distress, and provision of enrichment that promotes positive emotional experiences

Our Commitments

- Our animals receive the highest standards of care, guided by our Facility Operations Manuals, which reflect current best practices, CAZA guidelines, and emerging scientific research.
- Our animals are not removed from the wild for display. Individuals in our care come from rescue, surrender, or other ethical sources, and are provided a lifelong home through either permanent residence or retirement placement.
- Our animals receive lifelong, individualized care. Upon arrival, animals enter into a long-term care plan that includes appropriate housing, enrichment, socialization, and medical attention for the entirety of their lives.
- We prioritize animal enrichment and wellbeing. Animals are provided spacious and varied habitats, meaningful behavioral opportunities, and exposure to novel stimuli that support cognitive health and behavioral expression.
- We proactively minimize stress. Environmental controls, routine assessments, and recovery periods ("vacation" times) are in place to promote psychological wellness.
- Abuse or neglect is never tolerated. Any violation results in immediate dismissal and may be referred for legal action.
- Preventative health care is our standard. Our veterinary protocols focus on early intervention and ongoing health monitoring, ensuring timely and compassionate care when illness occurs.
- All staff are trained, monitored, and qualified. Our Level System ensures that Cast Members are only given access to animals they are properly trained and qualified to care for. Progression through the levels is based on demonstrated skill, knowledge, and adherence to welfare protocols.
- We recognize all animals in our care as sentient beings. Our standards reflect an understanding that reptiles, amphibians, arachnids, and vertebrate feeder animals experience pain, fear, and stress—and we are committed to minimizing these states.

Assessment and Oversight

- Reptilia maintains written animal welfare policies and procedures that guide consistent care, internal assessments, and ongoing monitoring of animal wellbeing. These policies are reviewed regularly and align with the CAZA standards and the WAZA Animal Welfare Strategy.
- An internal Animal Welfare Committee, composed of representatives from animal care, veterinary, education, and management teams, meets regularly to review practices, address concerns, and support continuous welfare improvements across the facility.
- This statement reflects our dedication—from leadership to front-line staff—to uphold the highest standards of care and compassion for every animal at Reptilia.

